

Colorado House

Crawford, Colorado, USA, completed 2018

The Colorado House is an off-grid house in the southern Rocky Mountains in Colorado, USA - constructed entirely from wood and shielded with a metal cladding to withstand harsh climate conditions, the house provides a high level of comfort and safety while being integrated in its natural surroundings, opening to breathtaking views into the valley and surrounding mountains.



Through a process of going into the client's intentions and lifestyles, we dug deep into the qualities the house will have to provide. Through this dialogue we let the design take shape almost by itself - the architect acted as a negotiator between spatial form-giving and raising the question of „*what spaces do you need to truly support who you are and how you live.*“

Combining this with the information and conditions the site provided, we designed the Colorado House as an off-grid wooden house that is barely touching the soil - it stands on eight small concrete footings lifting the structure off the ground. The house is turning its closed two walls towards the gravel road and neighbors while opening up towards the valley to an undisrupted view.

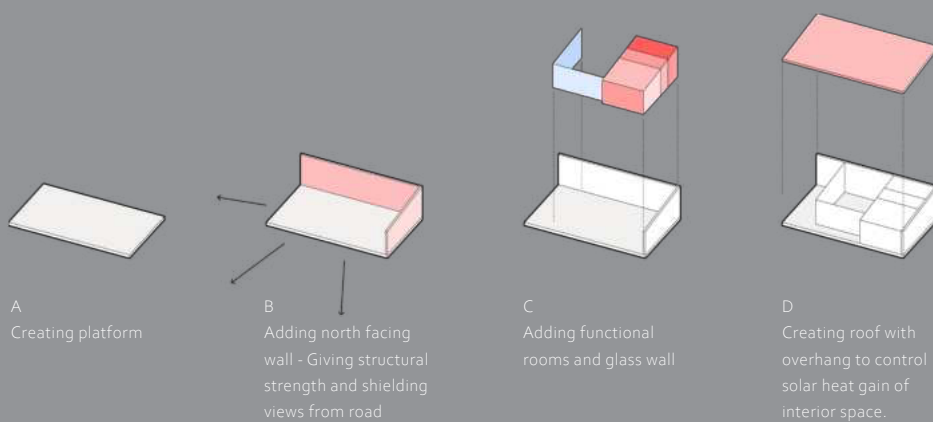
Almost all materials used are from natural origin - fir plywood and timber frame structure filled with wood fibre make the walls and roof, creating a warm and pleasant atmosphere, the exterior skin is a metal cladding that is long lasting, tough and needs little maintainance over the years.

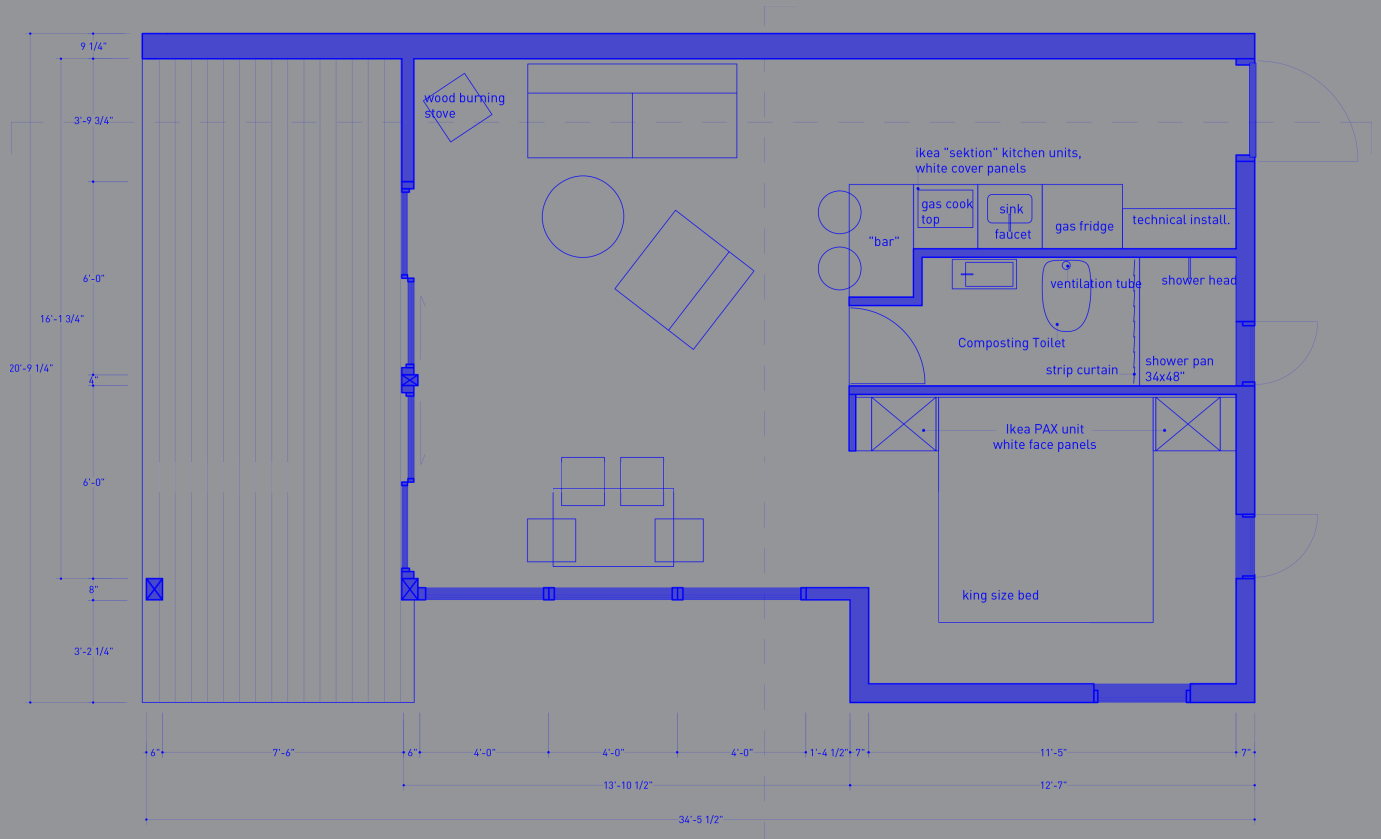


The interior is organized as a gradient from technical and introverted spaces towards open and exposed areas. Close to the entrance the technical installations and the kitchen are organized, next to the bathroom. Two windows in the bedroom are framing the two neighboring mountain peaks while being rather closed to provide a more protected and intimate feel. The central space of the house is utilized as living and dining room with a cozy wood burning stove, connecting all spaces of the house, followed by the veranda - an open platform reaching out into the valley. The platform is extended towards the southeast to catch the sunrise. Even though the platform is protected from neighboring views, the course of the sun can be followed throughout the entire day.

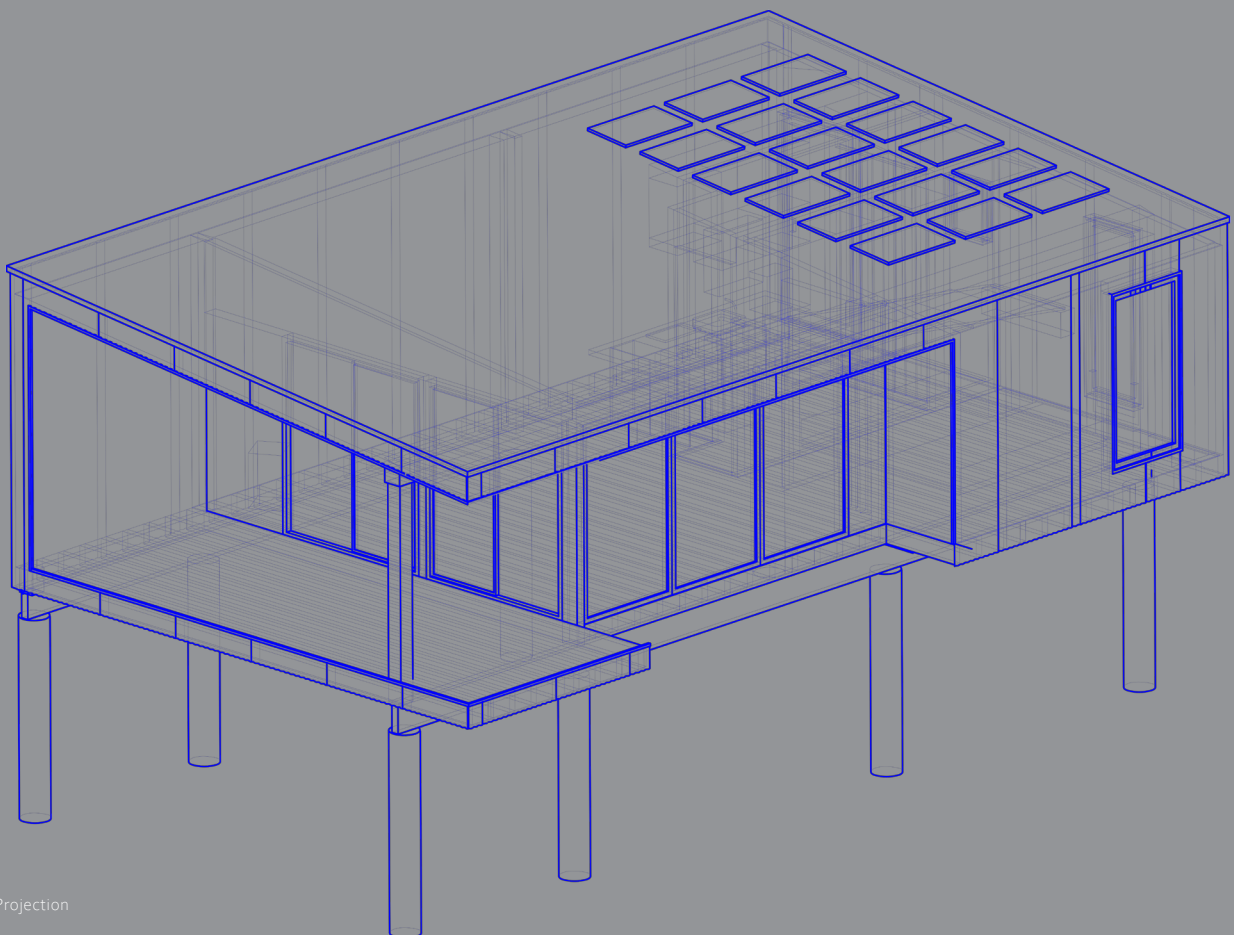
The Colorado House is completely off-grid while providing a high level of comfort. Electricity is produced from solar panels on the roof, water comes from a tank which gets refilled once a season and a Swedish odor-free composting toilet provides comfort while not needing any kind of sewage-system connection.

Since the house is located on 2.200m (7.200ft) altitude and can only be reached through a gravel road, the house needed to be constructed simple, rigid and in relatively small parts since no big trucks can reach the site. The house is built as a timber frame structure on a platform and was constructed within a few weeks, all materials and parts were cut and mounted on site.





Floor Plan



Parallel Projection





Project Period : 2015 - 2018
Budget : 120.000 USD
Floor Area : 592 ft² / 55 m²
Location : Crawford, Colorado, USA
Project Team : Philipp Ohnesorge, Troy Ostrander, Chiara Zazzini

www.philippohnesorge.com

© 2019



